

Piston type differential pressure gauge



Product features:

- Magnetic piston principle used to measure pressure differentiation
- High static pressure
- Bottom, back or In-line connection
- Aluminium, brass or SS 316 body & Monel
- Ingress protection IP 66
- +/- 2% accuracy
- Optional switch output
- **Brannan** quality and accuracy

Applications:

- Used to measure pressure drops
- Filtration systems
- Hydraulic systems
- Leak detection
- Water treatment
- Applications where marginal migration of the media from high pressure side to low pressure side is permitted

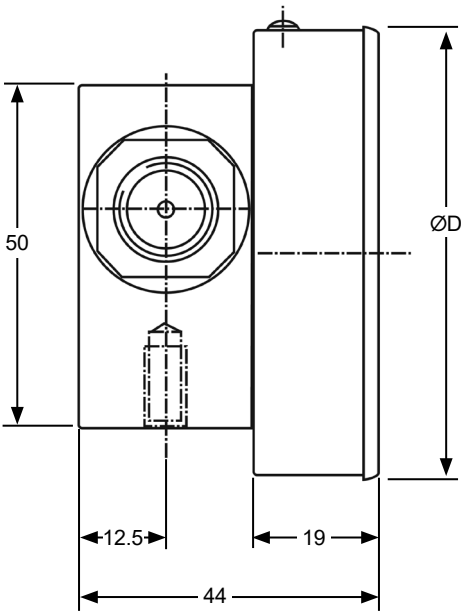
Standard product specifications:

DG010	
Migration of Media	Marginal
Gauge construction	
Case	Stainless steel 304 with rubber ring (optional engineered plastic case)
Body material	Aluminium, brass, stainless steel 316 or Monel
Wetted parts	Body material, SS 302 spring, ceramic magnet, seals
Connection orientation	Bottom, back, or in-line (contact us for other variations)
Mounting	Direct (others on request)
Measuring principle	Magnetic coupling using piston
Pointer	Black aluminium
Seals	Buna-N (Viton available on request)
Window	Instrument glass, acrylic or safety glass
Dial	White aluminium
Ranges & parameters	
Dial diameters	63mm (2.5"), 90mm (3.5"), 100mm (4"), 115mm (4.5") and 150mm (6")
Ranges	0 to 0.15 bar through to 0 to 70 bar
Thread size	1/4" NPT/BSP F (others available through adaptor)
Accuracy class	+/- 2% FS
Filling	Dry (glycerine/silicone filling optional)
Max static pressure	Aluminium & brass: 200 bar, SS 316 & Monel: 400 bar
Operating temperature	Ambient: 0 to 80°C / Medium temperature: 0 to 80°C
Protection	IP 66
Optional extras	
Calibration	Certification, certificate traceable to recognised national standard or statement of conformity

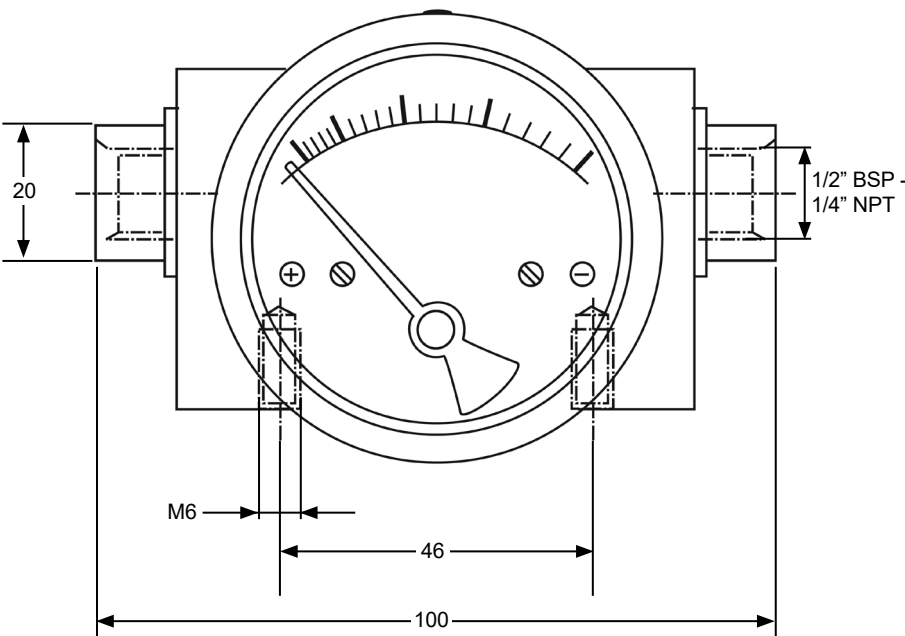
DG010

Piston type differential pressure gauge

Product dimensions:



Dial Ø	Case Ø (ØD)
63mm / 2.5"	66.0mm
90mm / 3.5"	83.0mm
100mm / 4.0"	104.3mm
115mm / 4.5"	119.7mm
150mm / 6.0"	154.3mm



Piston type differential pressure gauge

Product numbers:

All DG010 dials are ordered to specific customer specifications. Please use below matrix to create your unique ordering product reference, using the values in bold.

Make	Model	Dial diameter	Ranges	Units	Process connection	Connection orientation	Body material	Extras
Brannan (BRN)	DG010 (DG10)	63mm (63)	0 to 0.15 bar (0+0.15)	Bar (B)	1/4" BSP (F) (F3)	Bottom (BO)	SS 316 (316)	Viton seals (VIT)
		90mm (90)	0 to 2 Psi (0+2)	Psi (PSI)	1/4" NPT (F) (F4)	Back (BK)	Brass (BRS)	Plastic case* (PLA)
		100mm (100)	Through to	mBar (M)	1/2" BSP (F)* (F7)	In-line (IL)	Aluminium (AL)	Glycerine filling (G)
		115mm (115)	0 to 70 bar (0+70)	kPa (K)	1/2" NPT (F)* (F8)	In-line & bottom (ILBO)	Monel (MON)	Silicone filling (S)
		150mm (150)	0 to 1015 Psi (0+1015)	in H ₂ O (W) Kg/cm ² (KG)		In-line & back (ILBK)		Max pointer (MaxP)
			For gauges with zero centre please specify the negative and positive range.	Dual scale available on request	* Through adaptor			Front flange/ panel mount (FF)
								2" pipe mounting kit (PMO)
								Surface mounting kit (SMO)
								Centre zero (CZ)
								With switch** (SWI)

* 63, 115 & 150mm only
** See below table to select switch specifications

Optional switch specifications:

1A	One SPST with a DIN plug	+	SPST Specifications (AC / DC max)			
1B	One SPST with a terminal strip		1 (standard)	2	3	4
1C	One SPST with built in relay		10 VA	40 VA	100 VA	60 VA
2A	Two SPSTs with a DIN plug		100 V	230 V	300 V	240V
2B	Two SPSTs with a terminal strip		0.5 Amp	1 Amp	1 Amp	3 Amp
2C	Two SPSTs with built in relay		Adjustable*	Adjustable*	Adjustable*	Adjustable*
1D	One SPDT with a DIN plug	+	SPDT Specifications (AC / DC max)			
1E	One SPDT with a terminal strip		1 (standard)	2	3	4
2D	Two SPDTs with a DIN plug		3 VA	5 VA	5 VA	60 VA
2E	Two SPDTs with a terminal strip		30 V	125 V	175 V	400 V
			0.3 Amp	0.25 Amp	0.25 Amp	1 Amp
			Adjustable*	Adjustable*	Adjustable*	Factory Set

*Adjustable from 30% to 100% of range.
Order example: 2A1 is Two SPSTs with DIN plug, with switch specifications 10VA, 100V, 0.5Amp

Order example:

Make	Model	Dial diameter	Ranges	Units	Process connection	Connection orientation	Body material	Extras
BRN	DG10	100	0+15	P	F4	BO	316	S

Product reference: BRNDG10/100/0+15/P/F4/BO/316/S

NB. When more than one extra is required, separate each code with a hyphen when building your product reference.