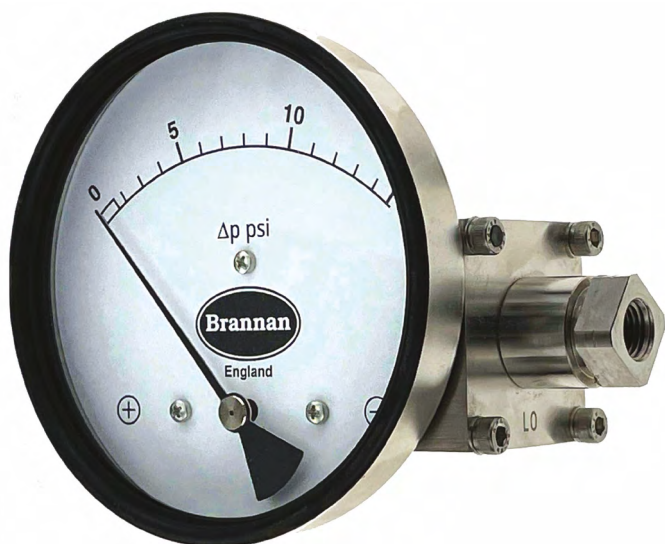


DG012

Convuluted diaphragm type differential pressure gauge



Product features:

- Magnetic coupling with convoluted diaphragm used to measure differential pressure
- No migration of the process media – zero leakage from high to low port
- Aluminium, brass, SS 316 or Monel body
- Ingress protection IP 66
- +/- 2% accuracy
- Optional switch output
- **Brannan** quality and accuracy

Applications:

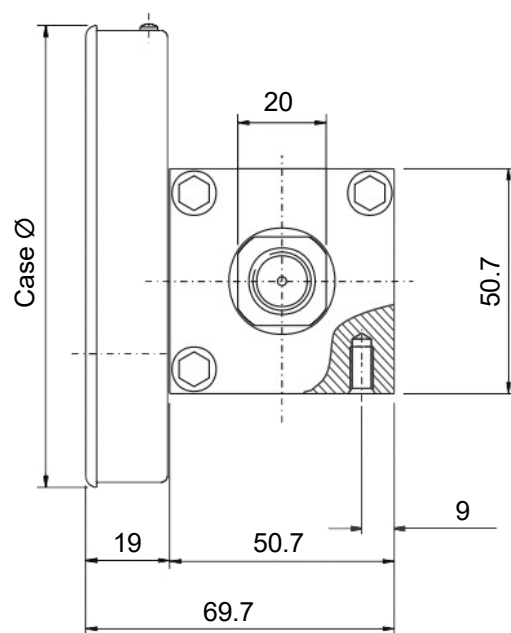
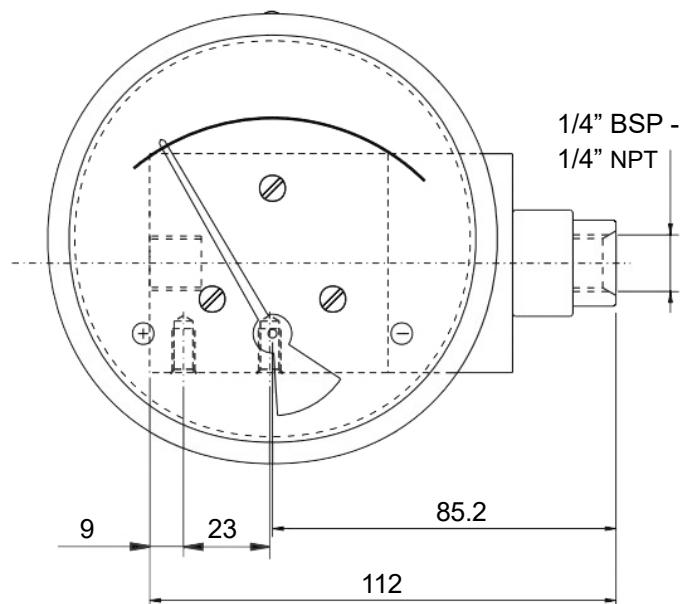
- Applications where no migration of the media from high pressure side to low pressure side is permitted
- Leak detection
- Filtration systems

Standard product specifications:

	DG012
Migration of Media	Zero
Gauge construction	
Case	Stainless steel 304 with rubber ring (optional engineered plastic case)
Body material	Aluminium, brass, stainless steel 316 or Monel
Wetted parts	Diaphragm, body material, SS 302 spring & ceramic magnet
Connection orientation	Bottom, back, or in-line (contact us for other variations)
Mounting	Direct (others on request)
Measuring principle	Magnetic coupling with convoluted diaphragm
Pointer	Black aluminium
Diaphragm	Buna-N (Viton available on request)
Window	Instrument glass, acrylic glass or safety glass
Dial	White aluminium
Ranges & parameters	
Dial diameters	63mm (2.5"), 90mm (3.5"), 100mm (4"), 115mm (4.5") and 150mm (6")
Ranges	0 to 0.075 bar through to 0 to 4 bar
Thread size	1/4" NPT/BSP F (others available through adaptor)
Accuracy class	+/- 2% FS
Filling	Dry (glycerine/silicone filling optional)
Max static pressure	100 bar
Operating temperature	Ambient: 0 to 80°C / Medium temperature: 0 to 80°C
Protection	IP 66
Optional extras	
Calibration	Certification, certificate traceable to recognised national standard or statement of conformity

Convolute diaphragm type differential pressure gauge

Product dimensions (in mms)



Dial Ø	Case Ø
63mm / 2.5"	66.0mm
90mm / 3.5"	83.0mm
100mm / 4.0"	104.3mm
115mm / 4.5"	119.7mm
150mm / 6.0"	154.3mm

Convuluted diaphragm type differential pressure gauge

Product numbers:

All DG012 dials are ordered to specific customer specifications. Please use below matrix to create your unique ordering product reference, using the values in bold.

Make	Model	Dial diameter	Ranges	Units	Process connection	Connection orientation	Body material	Extras
Brannan (BRN)	DG012 (DG12)	63mm (63)	0 to 0.075 bar (0+0.075)	Bar (B)	1/4" BSP (F) (F3)	Bottom (BO)	SS 316 (316)	Plastic case* (PLA)
		90mm (90)	0 to 1 Psi (0+1)	Psi (PSI)	1/4" NPT (F) (F4)	Back (BK)	Brass (BRS)	Viton diaphragm (VIT)
		100mm (100)	Through to	mBar (M)	1/2" BSP (F)* (F7)	In-line (IL)	Aluminium (AL)	Glycerine filling (G)
		115mm (115)	0 to 4 bar (0+4)	kPa (K)	1/2" NPT (F)* (F8)	In-line & bottom (ILBO)	Monel (MON)	Silicone filling (S)
		150mm (150)	0 to 60 Psi (0+60)	in H ₂ O (W) Kg/cm ² (KG)		In-line & back (ILBK)		Maximum pointer (MaxP)
			Other units available on request					Front flange/panel mount (FF)
			For gauges with zero centre please specify the negative and positive range	Dual scale available on request	* through adaptor	Contact for other options		2" pipe mounting kit (PMO)
								Surface mounting kit (SMO)
								Centre zero (CZ)
								With switch** (SWI)

* 63mm, 115mm & 150mm only.
 ** See below table to select switch specifications

Optional switch specifications:

1A	One SPST with a DIN plug
1B	One SPST with a terminal strip
1C	One SPST with built in relay
2A	Two SPSTs with a DIN plug
2B	Two SPSTs with a terminal strip

+

SPST Specifications (AC / DC max)			
1 (standard)	2	3	4
10 VA	40 VA	100 VA	60 VA
100 V	230 V	300 V	240V
0.5 Amp	1 Amp	1 Amp	3 Amp
Adjustable*	Adjustable*	Adjustable*	Adjustable*

1D	One SPDT with a DIN plug
1E	One SPDT with a terminal strip
2D	Two SPDTs with a DIN plug
2E	Two SPDTs with a terminal strip

+

SPDT Specifications (AC / DC max)			
1 (standard)	2	3	4
3 VA	5 VA	5 VA	60 VA
30 V	125 V	175 V	400 V
0.3 Amp	0.25 Amp	0.25 Amp	1 Amp
Adjustable*	Adjustable*	Adjustable*	Factory Set

*Adjustable from 30% to 100% of range.
 Order example: 2A1 is Two SPSTs with DIN plug, with switch specifications 10VA, 100V, 0.5Amp

Order example:

Make	Model	Dial diameter	Ranges	Units	Process connection	Connection orientation	Body material	Extras
BRN	DG12	100	0+0.075	B	F4	BO	316	G

Product reference: BRNDG12/100/0+0.075/B/F4/BO/316/G

NB. When more than one extra is required, separate each code with a hyphen when building your product reference.