

Convuluted diaphragm type differential pressure gauge



Product features:

- Magnetic coupling with convoluted diaphragm used to measure differential pressure
- No migration of the process media – zero leakage from high to low port
- Aluminium, brass, SS 316 or Monel body
- Ingress protection IP 66
- +/- 2% accuracy
- Optional switch output
- **Brannan** quality and accuracy

Applications:

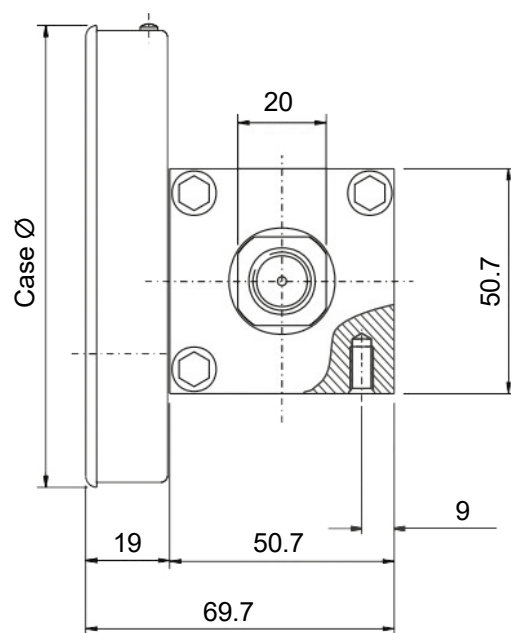
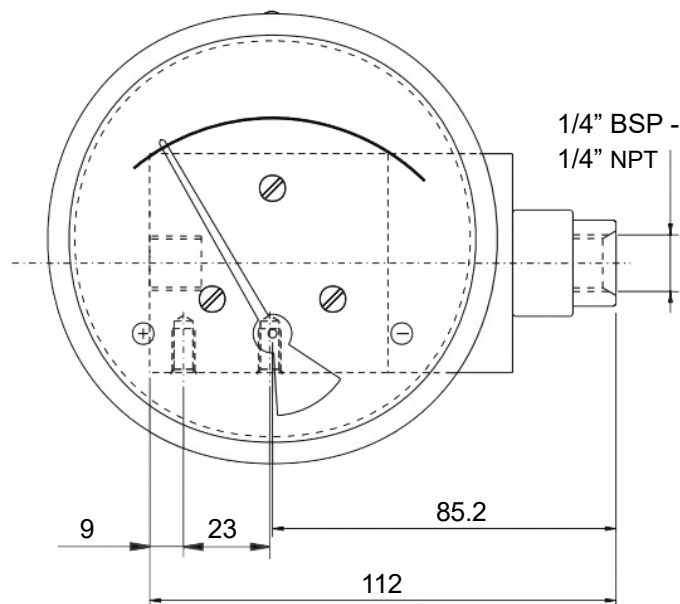
- Applications where no migration of the media from high pressure side to low pressure side is permitted
- Leak detection
- Filtration systems

Standard product specifications:

| DG012 | |
|------------------------|---|
| Migration of Media | Zero |
| Gauge construction | |
| Case | Stainless steel 304 with rubber ring (optional engineered plastic case) |
| Body material | Aluminium, brass, stainless steel 316 or Monel |
| Wetted parts | Diaphragm, body material, SS 302 spring & ceramic magnet |
| Connection orientation | Bottom, back, or in-line (contact us for other variations) |
| Mounting | Direct (others on request) |
| Measuring principle | Magnetic coupling with convoluted diaphragm |
| Pointer | Black aluminium |
| Diaphragm | Buna-N (Viton available on request) |
| Window | Instrument glass, acrylic or safety glass |
| Dial | White aluminium |
| Ranges & parameters | |
| Dial diameters | 63mm (2.5"), 90mm (3.5"), 100mm (4"), 115mm (4.5") and 150mm (6") |
| Ranges | 0 to 0.075 bar through to 0 to 4 bar |
| Thread size | 1/4" NPT/BSP F (others available through adaptor) |
| Accuracy class | +/- 2% FS |
| Filling | Dry (glycerine/silicone filling optional) |
| Max static pressure | 100 bar |
| Operating temperature | Ambient: 0 to 80°C / Medium temperature: 0 to 80°C |
| Protection | IP 66 |
| Optional extras | |
| Calibration | Certification, certificate traceable to recognised national standard or statement of conformity |

Convolute diaphragm type differential pressure gauge

Product dimensions (in mms)



| Dial Ø | Case Ø |
|--------------|---------|
| 63mm / 2.5" | 66.0mm |
| 90mm / 3.5" | 83.0mm |
| 100mm / 4.0" | 104.3mm |
| 115mm / 4.5" | 119.7mm |
| 150mm / 6.0" | 154.3mm |

Convuluted diaphragm type differential pressure gauge

Product numbers:

All DG012 dials are ordered to specific customer specifications. Please use below matrix to create your unique ordering product reference, using the values in bold.

| Make | Model | Dial diameter | Ranges | Units | Process connection | Connection orientation | Body material | Extras |
|------------------|-----------------|----------------|--|---------------------------------|-----------------------|----------------------------|-------------------|-------------------------------|
| Brannan (BRN) | DG012 (DG12) | 63mm (63) | 0 to 0.075 bar (0+0.075) | Bar (B) | 1/4" BSP (F) (F3) | Bottom (BO) | SS 316 (316) | Plastic case* (PLA) |
| | | 90mm (90) | 0 to 1 Psi (0+1) | Psi (PSI) | 1/4" NPT (F) (F4) | Back (BK) | Brass (BRS) | Viton diaphragm (VIT) |
| | | 100mm (100) | Through to | mBar (M) | 1/2" BSP (F)* (F7) | In-line (IL) | Aluminium (AL) | Glycerine filling (G) |
| | | 115mm (115) | 0 to 4 bar (0+4) | kPa (K) | 1/2" NPT (F)* (F8) | In-line & bottom (ILBO) | Monel (MON) | Silicone filling (S) |
| | | 150mm (150) | 0 to 60 Psi (0+60) | in H ₂ O (W) | | In-line & back (ILBK) | | Maximum pointer (MaxP) |
| | | | Other units available on request | | | | | Front flange/panel mount (FF) |
| | | | For gauges with zero centre please specify the negative and positive range | | | | | 2" pipe mounting kit (PMO) |
| | | | | Dual scale available on request | * through adaptor | Contact for other options | | Surface mounting kit (SMO) |
| | | | | | | | | Centre zero (CZ) |
| | | | | | | | | With switch** (SWI) |

* 63mm, 115mm & 150mm only.
 ** See below table to select switch specifications

Optional switch specifications:

| | |
|----|---------------------------------|
| 1A | One SPST with a DIN plug |
| 1B | One SPST with a terminal strip |
| 1C | One SPST with built in relay |
| 2A | Two SPSTs with a DIN plug |
| 2B | Two SPSTs with a terminal strip |

+

| SPST Specifications (AC / DC max) | | | |
|-----------------------------------|-------------|-------------|-------------|
| 1 (standard) | 2 | 3 | 4 |
| 10 VA | 40 VA | 100 VA | 60 VA |
| 100 V | 230 V | 300 V | 240V |
| 0.5 Amp | 1 Amp | 1 Amp | 3 Amp |
| Adjustable* | Adjustable* | Adjustable* | Adjustable* |

| | |
|----|---------------------------------|
| 1D | One SPDT with a DIN plug |
| 1E | One SPDT with a terminal strip |
| 2D | Two SPDTs with a DIN plug |
| 2E | Two SPDTs with a terminal strip |

+

| SPDT Specifications (AC / DC max) | | | |
|-----------------------------------|-------------|-------------|-------------|
| 1 (standard) | 2 | 3 | 4 |
| 3 VA | 5 VA | 5 VA | 60 VA |
| 30 V | 125 V | 175 V | 400 V |
| 0.3 Amp | 0.25 Amp | 0.25 Amp | 1 Amp |
| Adjustable* | Adjustable* | Adjustable* | Factory Set |

*Adjustable from 30% to 100% of range.

Order example: 2A1 is Two SPSTs with DIN plug, with switch specifications 10VA, 100V, 0.5Amp

Order example:

| Make | Model | Dial diameter | Ranges | Units | Process connection | Connection orientation | Body material | Extras |
|------|-------|---------------|---------|-------|--------------------|------------------------|---------------|--------|
| BRN | DG12 | 100 | 0+0.075 | B | F4 | BO | 316 | G |

Product reference: BRNDG12/100/0+0.075/B/F4/BO/316/G

NB. When more than one extra is required, separate each code with a hyphen when building your product reference.