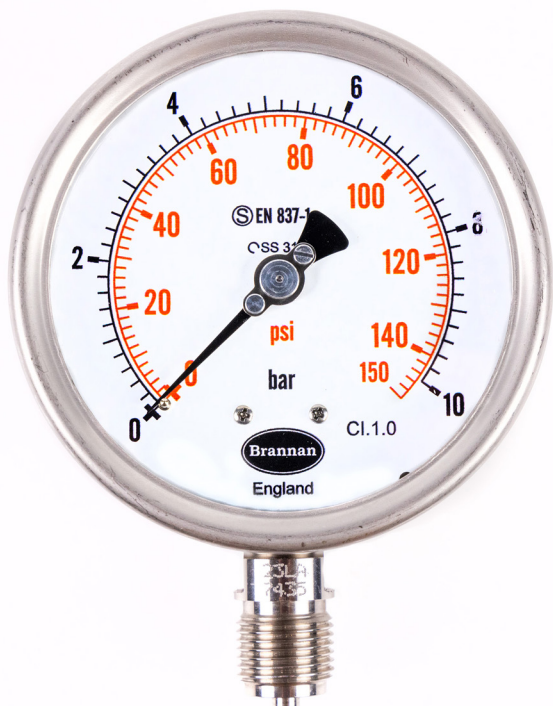


Safety pattern stainless steel pressure gauge



Product features:

- Safety pattern gauge designed for operator safety
- 1% accuracy (0.5% optional)
- Stainless steel case with solid front baffle wall and blowout back
- Safety glass window
- SS 316, SS316L or Monel wetted parts
- Suitable for corrosive pressure media
- Ingress protection IP 67
- Case and socket welded
- Dry or fillable (glycerine, silicone, halocarbon)
- **Brannan** quality and accuracy

Applications:

- Where operator safety is critical
- Oil and gas
- Chemical and petrochemical

Standard product specifications:

PG045	
Standards & categories	
Design	BS EN 837 / ASME B40.100
Safety category	S3; safety pattern gauge with baffle wall
Gauge construction	
Case	Stainless steel 304 (316 available on request)
Connection orientation	100mm & 115mm: bottom only, 150mm: bottom or lower back
Connection material	Stainless steel 316 welded to case (optional SS 316L, Monel or Hastelloy-C276)
Bezel	Stainless steel 304 bayonet bezel
Pointer	Black aluminium, micro adjustable
Measuring principle	Bourdon tube SS 316 (optional SS 316L, Monel or Hastelloy-C276)
Movement	Stainless steel 304
Window	Laminated safety glass
Ranges & parameters	
Dial diameters	100mm (4"), 115mm (4.5") & 150mm (6")
Ranges	-1 to 0 bar & -15 to 0 psi through to 0 to 2500 bar & 0 to 36000 psi
Thread size	1/4", 3/8", 1/2" BSP/NPT/BSPT (others available on request)
Accuracy class	1% (0.5% optional)
Filling	Dry, glycerine, silicone or halocarbon
Working pressure	Steady: 75% full scale range, fluctuating: 60% full scale range, short time: full scale range
Operating temperature	Ambient: -40 to +60°C (dry, silicone filled or halocarbon filled), -7 to +60°C (glycerine filled) Medium: -40 to +200°C (dry), -10 to +100°C (silicone filled or halocarbon filled), -7 to +60°C (glycerine filled)
Storage temperature	-40 to +60°C
Protection	IP 67
Temperature effect	When temperature of the pressure element deviates from reference temperature of 20°C the maximum additional error is +/-0.4 per 10°C of the span rising and falling
Optional extras	
Calibration	UKAS certification, certificate traceable to recognised national standard or statement of conformity
Accessories	Syphon, needle valve, gauge cock, snubber

PG045

✉ sales@brannan.co.uk

☎ +44 (0)1946 816600

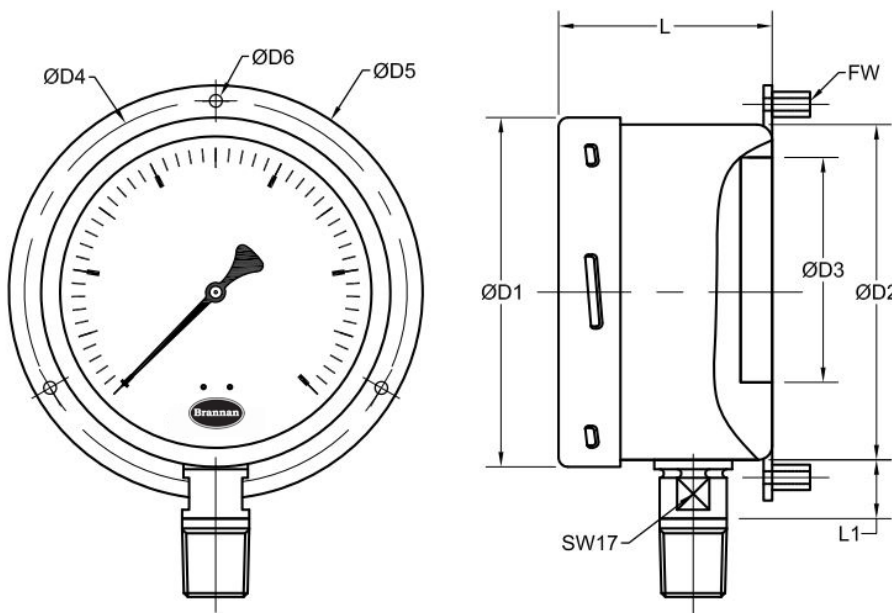
🌐 brannan.co.uk

Safety pattern stainless steel pressure gauge

Max working pressure per connection type
(for SS 316 material):

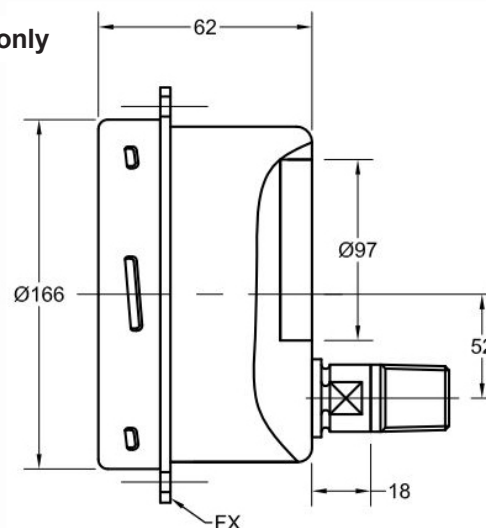
Thread	Max pressure
1/4" BSP/NPT	1000 bar
3/8" BSP	1000 bar
1/2" BSP	1600 bar
1/2" NPT	1000 bar
9/16-18 UNF-2B (F)	2500 bar

Product dimensions:



Dial size	Ø100	Ø115	Ø150
ØD1	109mm	127mm	166mm
ØD2	99mm	115mm	152mm
ØD3	85mm	97mm	113mm
ØD4	118mm	136mm	168mm
ØD5	132mm	152mm	186mm
ØD6	6mm	6mm	6mm
L	58mm	58mm	62mm
L2	13mm	18mm	18mm

Lower back entry - 150mm dial only



Measurement for life.

Brannan

Safety pattern stainless steel pressure gauge

Product numbers:

All PG045 dials are ordered to specific customer specifications. Please use below matrix to create your unique ordering product reference, using the values in bold.

Make	Model	Dial diameter	Ranges	Units	Connection size	Connection orientation	Filling	Extras
Brannan (BRN)	PG045 (PG45)	100mm (4.0") (100)	-1 to 24 bar (-1+24)	Bar only (black) (B)	1/4" BSP (3)	Bottom (BO)	Dry No filling (D)	316L wetted parts (316L)
		115mm (4.5") (115)	-30 to 350 Hg/Psi (-30+350)	Psi only (black) (P)	1/4" NPT (4)	Lower back, (LB)	Glycerine (G)	Monel wetted parts (MON)
		150mm (6.0") (150)	Through to 0 to 2500 bar (0+2500) 0 to 36250 Psi (0+36250)	Bar outer (black) / psi inner (red) (BP)	1/4" BSPT (10)		Silicone (S)	Hastelloy-C276 wetted parts (HAS)
				Psi outer (red) / bar inner (black) (PB)	3/8" BSP (5)		Halocarbon (H)	0.5% accuracy (0.5%)
				kPa outer (black) / Psi inner (red) (KP)	3/8" NPT (6)			Materials Test Certificate (MTC)
				Psi outer (red) / kPa inner (black) (PK)	3/8" BSPT (11)			SS 316L case (CAS316L)
					1/2" BSP (7)			Front flange (FF)
					1/2" NPT (8)			Back flange (BF)
					1/2" BSPT (12)			
					9/16-18 UNF-2B (Female) (20)			
				NB. Other units available on request			1. 150mm only	
								NB. When more than one extra is required, separate each code with a hyphen when building your product reference.

Order example:

Make	Model	Dial diameter	Ranges	Units	Connection size	Connection orientation	Filling	Extras
BRN	PG45	100	0+10	B	8	BO	D	316L-MTC

Product reference: BRNPG45/100/0+10/B/8/BO/D/316L-MTC

Calibration product numbers:

Calibration	No of points	Product number
UKAS	5pt	49/075/0
Traceable to National Standards	5pt	49/060/0

Other calibration types available on request