

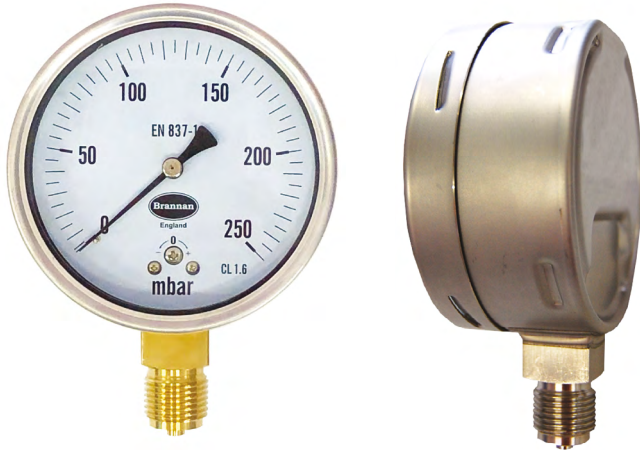
# Product data sheet

✉ [sales@brannan.co.uk](mailto:sales@brannan.co.uk)

☎ +44 (0)1946 816600

🌐 [brannan.co.uk](http://brannan.co.uk)

## CAP040 - STAINLESS STEEL CAPSULE GAUGE



### Product features:

- Low pressure capsule gauge
- SS 316 or brass wetted parts
- Ingress protection IP67/IP65
- Micro adjustable pointer
- Glycerine filling available
- **Brannan** quality and accuracy
- For harsh and corrosive environments and pressure media

### Applications:

- Heating, ventilation, air-conditioning
- Pulp and paper industry
- Pumps, compressors, hydraulic presses
- Pneumatics
- Outdoor installations
- Food and beverage industry
- Machine and apparatus construction
- High humidity installations
- Hydraulics

### Standard product specifications:

<b>Dial diameters</b>	63mm, 100mm & 150mm
<b>Design</b>	BS EN 837 - 3
<b>Accuracy class</b>	63mm: 2.5% / 100mm & 160mm: 1.6%
<b>Ranges</b>	0 to 25 mbar through to 0 to 600 mbar & kPa
<b>Case</b>	Stainless steel 304
<b>Process connection</b>	1/8", 1/4", 3/8" & 1/2" BSP/NPT/BSPT (others available on request)
<b>Connection orientation</b>	Bottom & centre back
<b>Connection material</b>	Stainless steel 316 (laser welded to case) or brass
<b>Bezel</b>	Stainless steel 304 bayonet bezel
<b>Measuring principle</b>	Capsule, stainless steel 316 or brass
<b>Movement</b>	Stainless steel 304
<b>Window</b>	Tempered safety glass (laminated safety glass optional)
<b>Pointer</b>	Black aluminium and micro adjustable pointer
<b>Filling</b>	Dry or glycerine
<b>Working pressure</b>	Steady: 75% full scale range Fluctuating: 60% full scale range Short time: full scale range
<b>Operating temperature</b>	Ambient: silicone/dry: -40 to +60°C, glycerine: -20 to +60°C Medium: silicone/dry: -40 to +100°C, glycerine: -20 to +60°C
<b>Storage temperature</b>	-40 to +60°C
<b>Temperature effect</b>	When temperature of the pressure element deviates from reference temperature of 20°C the maximum additional error is +/-0.6 per 10°C of the span rising and falling
<b>Ingress protection</b>	Stainless steel connection: IP 67 / brass connection: IP65
<b>Calibration</b>	UKAS certification, certificate traceable to recognised national standard or statement of conformity, if required

# Product data sheet

✉ [sales@brannan.co.uk](mailto:sales@brannan.co.uk)

☎ +44 (0)1946 816600

🌐 [brannan.co.uk](http://brannan.co.uk)

## Product numbers:

All CAP40 dials are ordered to specific customer specifications. Please use below matrix to create your unique ordering product reference, using the values in bold.

Make	Model	Dial diameter	Ranges	Units	Wetted parts	Connection size	Connection orientation	Filling	Extras
Brannan <b>(BRN)</b>	CAP040 <b>(CAP40)</b>	63mm <sub>1</sub> <b>(63)</b>	0 to 25 Mbar <b>(0+25)</b>	mbar only <b>(M)</b>	SS 316 <b>(SS316)</b>	1/8" BSP <sub>1</sub> <b>(1)</b>	Bottom <b>(BO)</b>	Dry - no filling <b>(D)</b>	Laminated safety glass window <b>(LG)</b>
		100mm <b>(100)</b>	0 to 2.5 kPa <b>(0+2.5)</b>	kPa only <b>(K)</b>	Brass* <b>(BRS)</b>	1/8" NPT <sub>1</sub> <b>(2)</b>	Centre back <b>(CB)</b>	Glycerine <sub>1</sub> <b>(G)</b>	Front flange <b>(FF)</b>
		150mm <b>(150)</b>	through to	Psi only <b>(P)</b>	3/8" BSP <sub>2</sub> <b>(5)</b> 3/8" NPT <sub>2</sub> <b>(6)</b> 1/2" BSP <sub>2</sub> <b>(7)</b> 1/2" NPT <sub>2</sub> <b>(8)</b> 1/8" BSPT <sub>1</sub> <b>(9)</b> 1/4" BSPT <b>(10)</b> 3/8" BSPT <sub>2</sub> <b>(11)</b> 1/2" BSPT <sub>2</sub> <b>(12)</b>	Back flange <b>(BF)</b>			
			0 to 600 Mbar <b>(0+600)</b>	mbar outer (black) / psi inner (red) <b>(MP)</b>					
0 to 60 kPa <b>(0+60)</b>	Psi outer (red) / mbar inner (black) <b>(PM)</b>								
				kPa outer (black) / psi inner (red) <b>(KP)</b>					
				Psi outer (red) / kPa inner (black) <b>(PK)</b>					
		1. Not available with SS316 wetted parts.	NB. Equivalent vacuum ranges also available	NB. Other units available on request	* IP65. No laser welding connection to case	1. 63mm only 2. 100mm & 150mm only NB. Others available on request		1. Only available above 100 mbar	NB. When more than one extra is required, please separate each code with a comma when building your product reference

## Order example:

Make	Model	Dial diameter	Ranges	Units	Wetted parts	Connection size	Connection orientation	Filling	Extras
<b>BRN</b>	<b>CAP40</b>	<b>100</b>	<b>0+25</b>	<b>M</b>	<b>SS316</b>	<b>7</b>	<b>BO</b>	<b>D</b>	<b>LG,FF</b>

Product reference: BRNCAP40/100/0+25/M/SS316/7/BO/D/LG,FF