

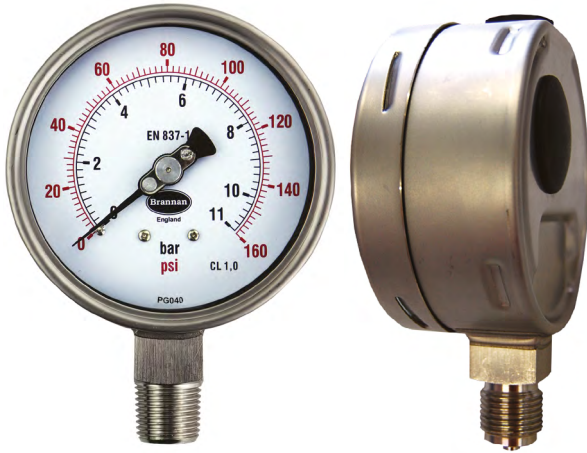
# Product data sheet

✉ [sales@brannan.co.uk](mailto:sales@brannan.co.uk)

☎ +44 (0)1946 816600

🌐 [brannan.co.uk](http://brannan.co.uk)

## PG040 - STAINLESS STEEL PRESSURE GAUGE



### Product features:

- Stainless steel 316 wetted parts for corrosive pressure media
- Connection and case laser welded
- Ingress Protection IP 67
- Micro adjustable pointer
- Silicone or glycerine filling available
- Wide choice of pressure ranges
- **Brannan** quality and accuracy
- For harsh and corrosive environments and pressure media
- Range of associated accessories available

### Applications:

- Heating, ventilation, air-conditioning
- Pulp and paper industry
- Pumps, compressors, hydraulic presses
- Pneumatics
- Outdoor installations
- Food and beverage industry
- Machine and apparatus construction
- High humidity installations
- Hydraulics

### Standard product specifications:

Dial diameters	63mm, 100mm & 160mm
Design	BS EN 837
Safety category	63mm: 0 (no blow-out device), 100mm & 160mm: S1 (blow-out device gauge)
Accuracy class	1.0%
Ranges	-1 to 9 bar & psi through to 0 to 1000 bar & psi
Case	Stainless steel 304
Process connection	1/8", 1/4", 3/8" & 1/2" BSP/NPT/BSPT (others available on request)
Connection orientation	63mm - bottom & centre back, 100mm & 160mm - bottom & lower back
Connection material	Stainless steel 316 (laser welded to case)
Bezel	Stainless steel 304 bayonet bezel
Measuring principle	Bourdon tube stainless steel 316
Movement	Stainless steel 304
Window	Tempered safety glass (laminated safety glass optional)
Pointer	Black aluminium and micro adjustable pointer
Filling	Dry, glycerine or silicone
Working pressure	Steady: 75% full scale range Fluctuating: 60% full scale range Short time: full scale range
Operating temperature	Ambient: silicone/dry: -40 to +60°C, glycerine: -20 to +60°C Medium: silicone/dry: -40 to +100°C, glycerine: -20 to +60°C
Storage temperature	-40 to +60°C
Temperature effect	When temperature of the pressure element deviates from reference temperature of 20°C the maximum additional error is +/-0.4 per 10°C of the span rising and falling
Ingress protection	IP 67
Calibration	UKAS certification, certificate traceable to recognised national standard or statement of conformity, if required

# Product data sheet

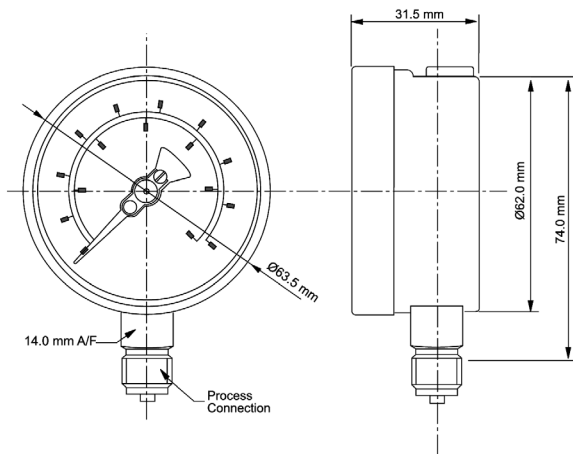
✉ [sales@brannan.co.uk](mailto:sales@brannan.co.uk)

☎ +44 (0)1946 816600

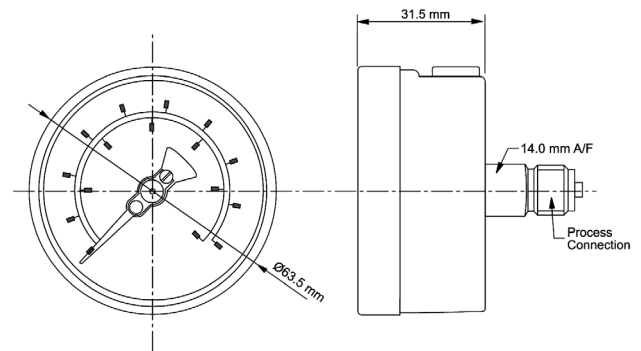
🌐 [brannan.co.uk](http://brannan.co.uk)

## Product dimensions:

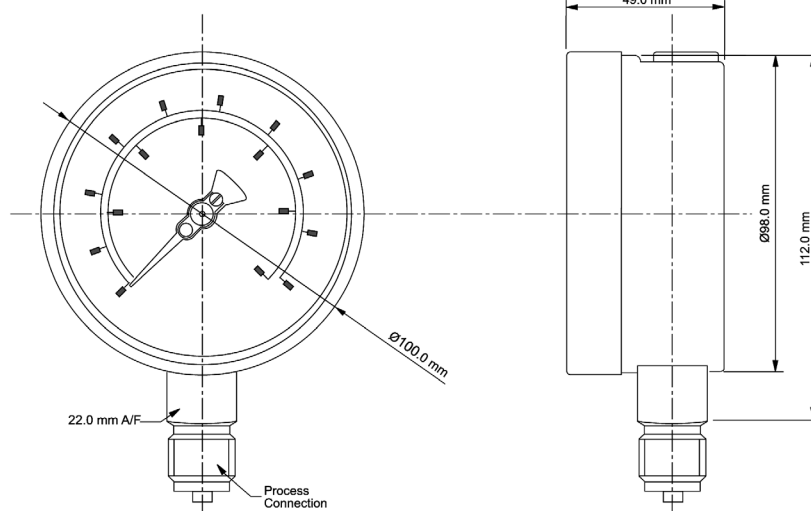
### 63mm dial pressure gauge - bottom entry



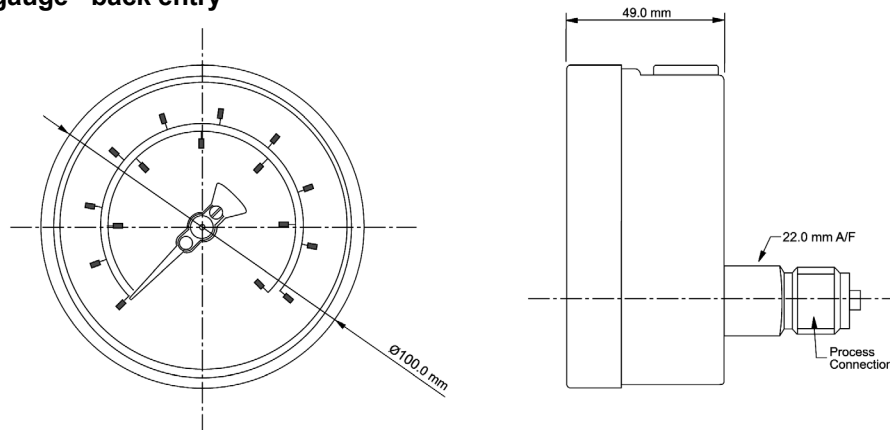
### 63mm dial pressure gauge - back entry



### 100mm dial pressure gauge - bottom entry



### 100mm dial pressure gauge - back entry



Measurement for life.

Brannan

# Product data sheet

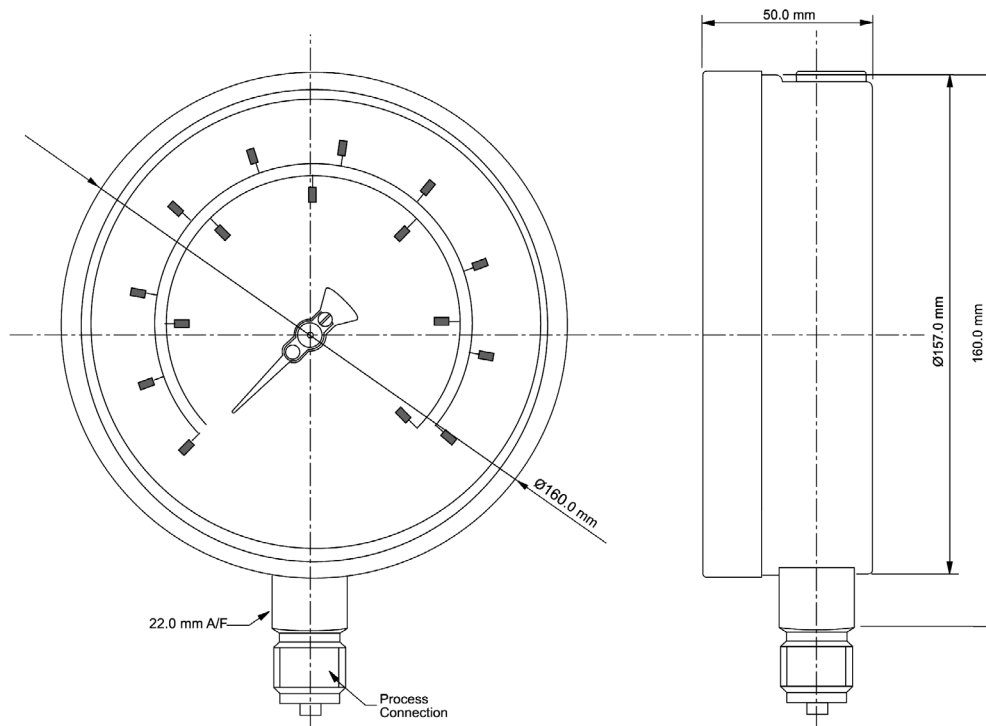
✉ [sales@brannan.co.uk](mailto:sales@brannan.co.uk)

☎ +44 (0)1946 816600

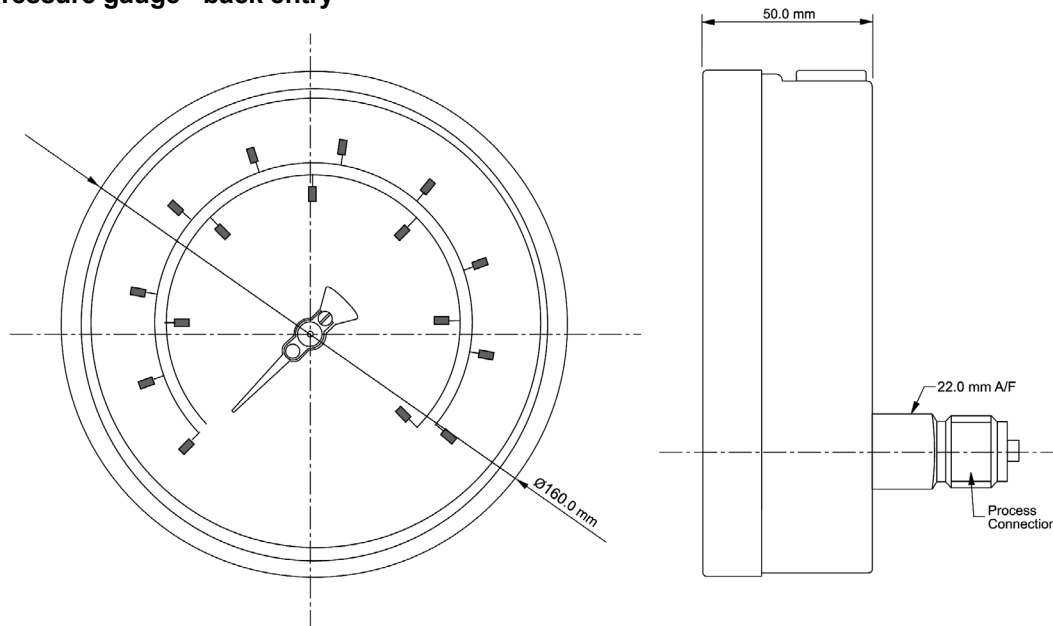
🌐 [brannan.co.uk](http://brannan.co.uk)

## Product dimensions:

### 160mm dial pressure gauge - bottom entry



### 160mm dial pressure gauge - back entry



# Product data sheet

✉ [sales@brannan.co.uk](mailto:sales@brannan.co.uk)

☎ +44 (0)1946 816600

🌐 [brannan.co.uk](http://brannan.co.uk)

## Product numbers:

The following products are usually kept in stock at Brannan and can therefore be ordered on the below numbers:

### 100mm dial pressure gauge - dry (bar outer scale, psi inner scale)

Range bar & PSI	Bottom connection 1/2" BSP
0 to 6	37/893/0
0 to 10	37/894/0
0 to 16	37/895/0

Other PG040 dials are ordered to specific customer specifications. Please use below matrix to create your unique ordering product reference, using the values in bold.

Make	Model	Dial diameter	Ranges	Units	Connection size	Connection orientation	Filling	Extras
Brannan (BRN)	PG040 (PG40)	63mm (63)  100mm (100)  160mm (160)	-1 to 9 bar (-1+9) -30 to 130 Hg/Psi (-30+130)  through to 0 to 1000 bar (0+1000) 0 to 14500 Psi (0+14500)	Bar only (black) (B)  Psi only (black) (P)  Bar outer (black) / psi inner (red) (BP)  Psi outer (red) / bar inner (black) (PB)  kPa outer (black) / Psi inner (red) (KP)  Psi outer (red) / kPa inner (black) (PK)  NB. Other units available on request	1/8" BSP <sub>1</sub> (1) 1/8" NPT <sub>1</sub> (2) 1/4" BSP <sub>1</sub> (3) 1/4" NPT <sub>1</sub> (4) 3/8" BSP <sub>2</sub> (5) 3/8" NPT <sub>2</sub> (6) 1/2" BSP <sub>2</sub> (7) 1/2" NPT <sub>2</sub> (8) 1/8" BSPT <sub>1</sub> (9) 1/4" BSPT <sub>1</sub> (10) 3/8" BSPT <sub>2</sub> (11) 1/2" BSPT <sub>2</sub> (12) 7/16" UNF (13)  1. 63mm only 2. 100mm & 160mm only NB. Others available on request	Bottom (BO)  Centre back <sub>1</sub> (CB)  Lower back <sub>2</sub> (LB)	Dry - no filling (D)  Glycerine (G)  Silicone (S)	Laminated safety glass window (LG)  Front flange (FF)  Back flange (BF)  Brass wetted parts* (BRS)  * IP rating IP65 * No laser welding connection to case NB. When more than one extra is required, please separate each code with a comma when building your product reference

### Order example:

Make	Model	Dial diameter	Ranges	Units	Connection size	Connection orientation	Filling	Extras
BRN	PG40	100	0+10	B	7	BO	D	LG,FF

Product reference: BRNPG40/100/0+10/B/7/BO/D/LG,FF

## Calibration product numbers:

Calibration	No of points	Product number
UKAS	5pt	49/075/0
Traceable to National Standards	5pt	49/060/0

Other calibration types available on request

View me on  
the website



Measurement for life.

